

# Risk and Resources in Fulton County, PA

Summary of the 2013 PAYS



# History and Overview of the PAYS

- A voluntary survey conducted in schools every other year since 1989
- PAYS adopted from the Communities That Care Risk Surveys
- 2013 Administration changes
  - New vendor: Bach Harrison
  - Refined Questions around anti-social behaviors
  - Additional topic areas including Social and Emotional Health
  - Refined analysis of risk and protective factors
- [www.portal.state.pa.us/portal/server.../pennsylvania\\_youth\\_survey/5396](http://www.portal.state.pa.us/portal/server.../pennsylvania_youth_survey/5396)



# History and Overview of the PAYS

- PAYS assesses youth behaviors, attitudes, and knowledge
  - What they think, know, do.
- Additional questions have been added throughout years
- Collects data across multiple domains that impact students' lives
  - Community
  - School
  - Family
  - Peer/Individual

# Participation by the Numbers

# of Students Participating

YEAR	COUNTY	STATE
2009	255	16,899
2011	485	24,016
2013	357	200,622



# Risk Factor Changes

- Risk Factors Removed
  - Transition and Mobility, Community Disorganization, Early Initiation of Drug Use
- Risk Factor Added
  - Depressive Symptoms
- Risk Factors Renamed
  - Poor academic performance -----Academic Failure
  - Lack of Commitment to School -----Low Commitment to school
  - Favorable Attitudes toward ATOD use -----Attitudes Favorable to Drug Use
  - Friends' Delinquent Behavior -----Interaction with Antisocial Peers
  - Favorable Attitudes Toward ASB -----Attitudes Favorable to ASB
  - Peer Rewards for Antisocial behavior -----Rewards for ASB
  - Low Perceived Risks of Drug Use -----Perceived Risk of Drug Use

# Work Group Members

## Risk Committee

- Melissa Reisinger
- Julie Dovey
- Carrie Clippinger
- Kenneth Wuertenberg
- Michele Baker
- Alex Serrano
- Gen Harper

## Resource Committee

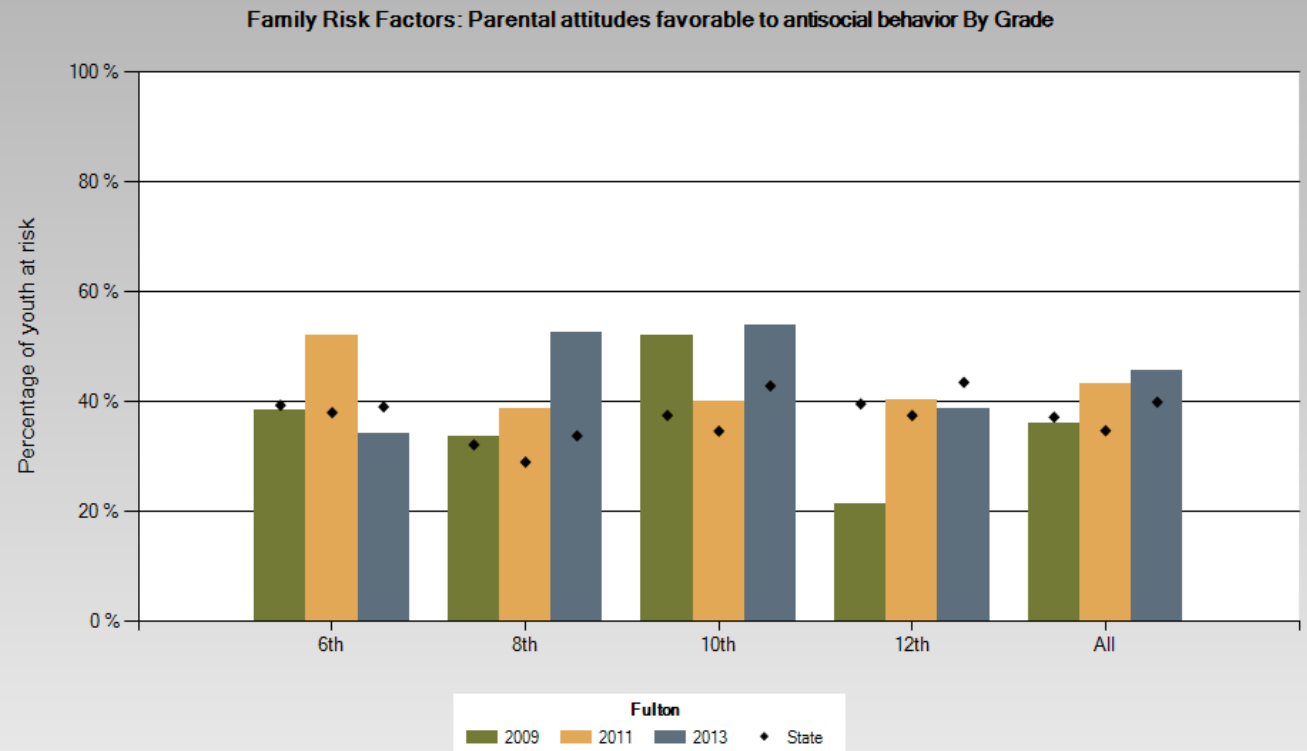
- Jack Elvey
- Lauri Ryder
- Elen Ott
- Karen Solomon
- Erin Glenn
- Brian Gannon
- Kim Lucas



# Elevated Risk-Parental Attitudes Favorable to Antisocial Behavior (Family Domain)

## *Current Programs*

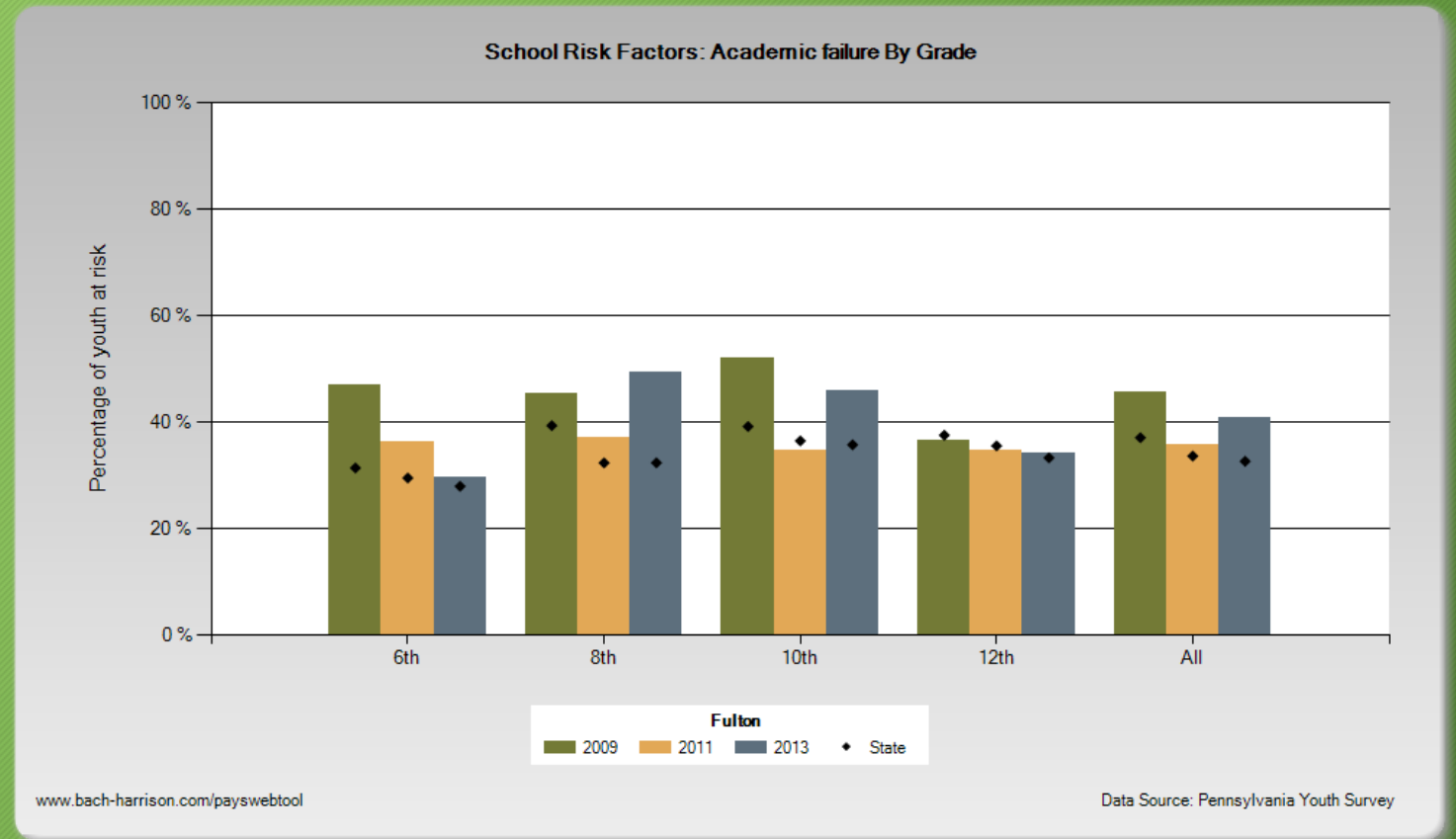
- Children In Between
- Incredible Years
- Nurturing Parenting
- Parents As Teachers (PAT)
- Providing Alternative THinking Strategies (PATHS)
- Family Group Decision Making
- Head Start
- Student Assistant Program (SAP)
- Check and Connect
- “Kick Off” Summer Program



# Elevated Risk- Academic Failure (School Domain)

## *Current Programs*

- Incredible Years
- Olweus Bullying Program
- Providing Alternative Thinking Strategies (PATHS)
- Too Good for Drugs
- Student Assistance Program (SAP)
- Check and Connect

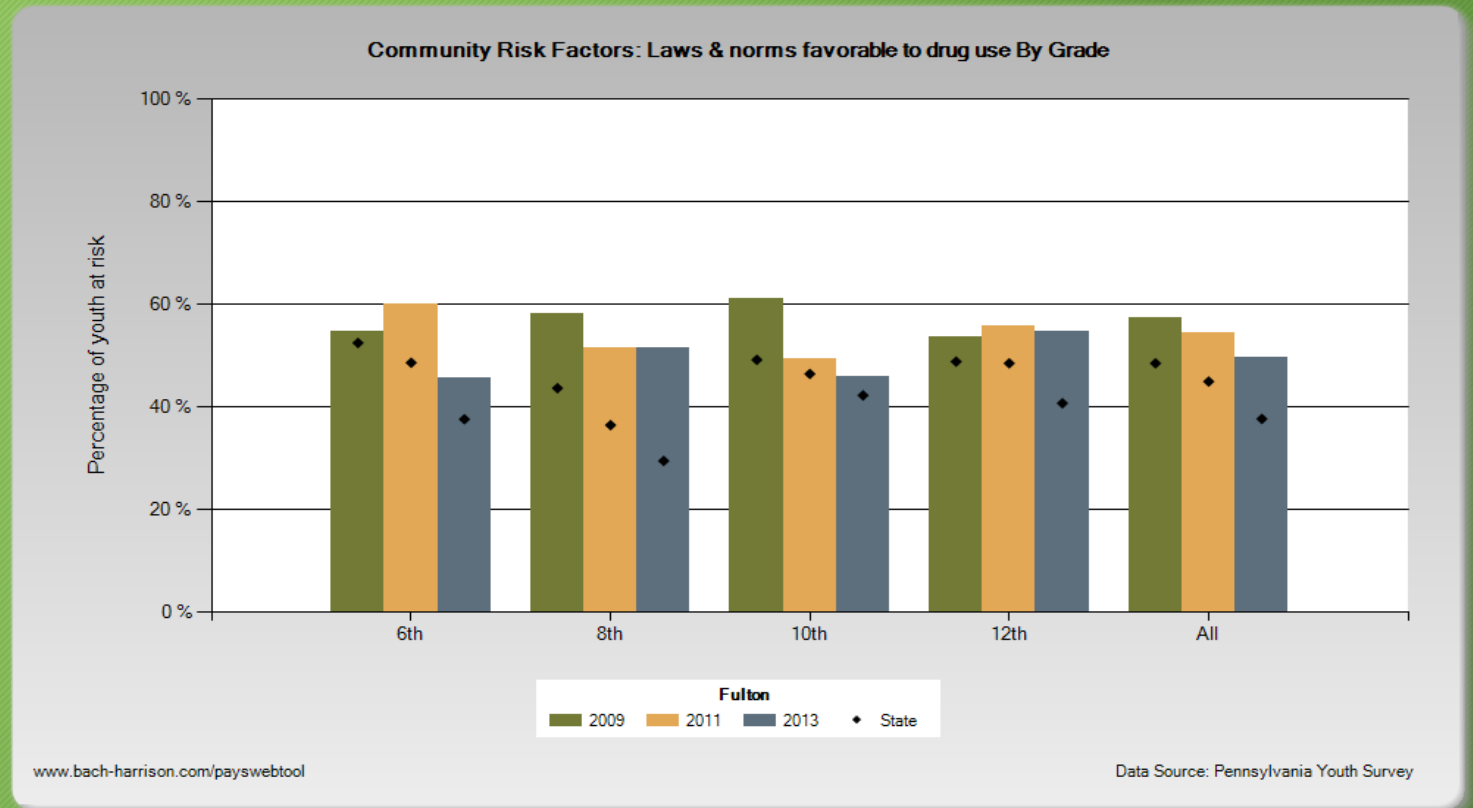




# Elevated Risk-Laws and Norms Favorable to Drug Use (Community Domain)

- *Current Programs*

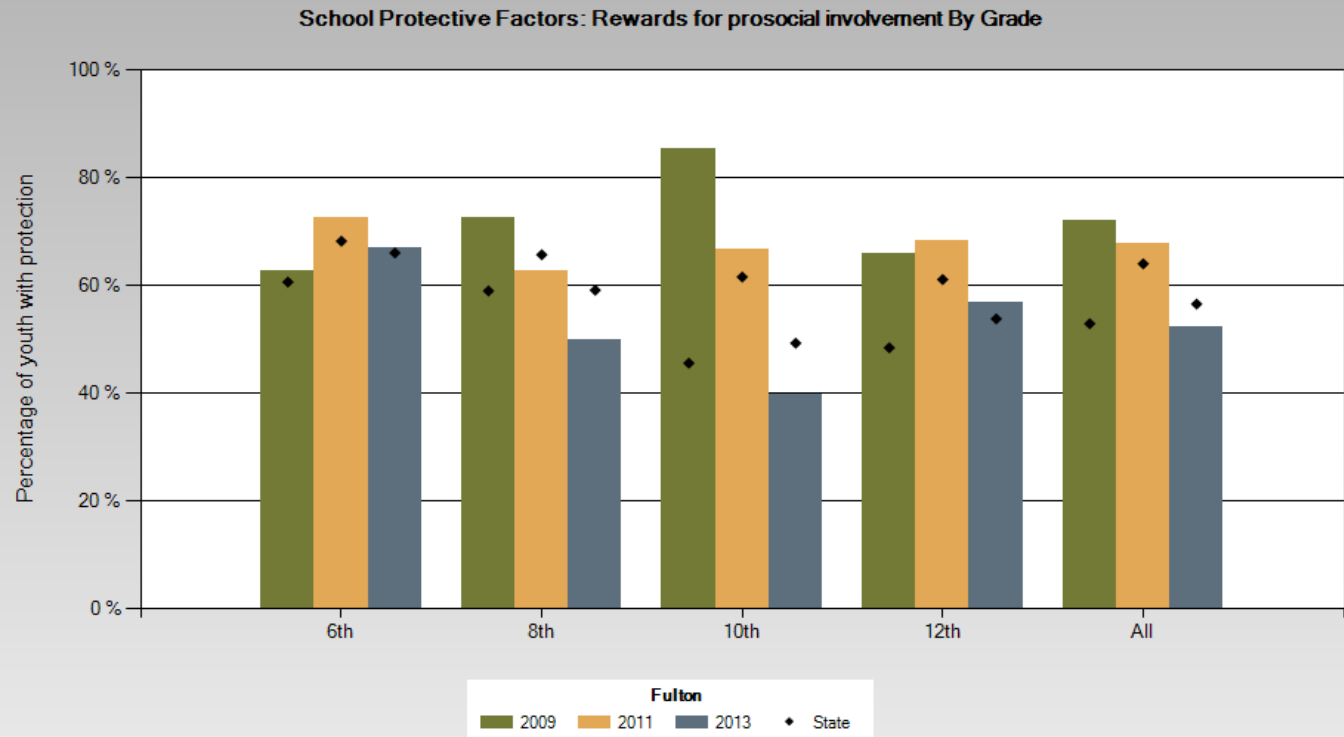
- Olweus Bullying Program
- Parents that Host
- Back to School Bash
- Drug Take-Back Events
- “Kick Off” Summer Program



# Decreasing Protective Factor-Rewards for Prosocial Involvement (School Domain)

- *Current Programs*

- Incredible Years
- Olweus Bullying Program
- Providing Alternative Thinking Strategies
- Too Good for Drugs
- Student Assistance Program
- Check and Connect

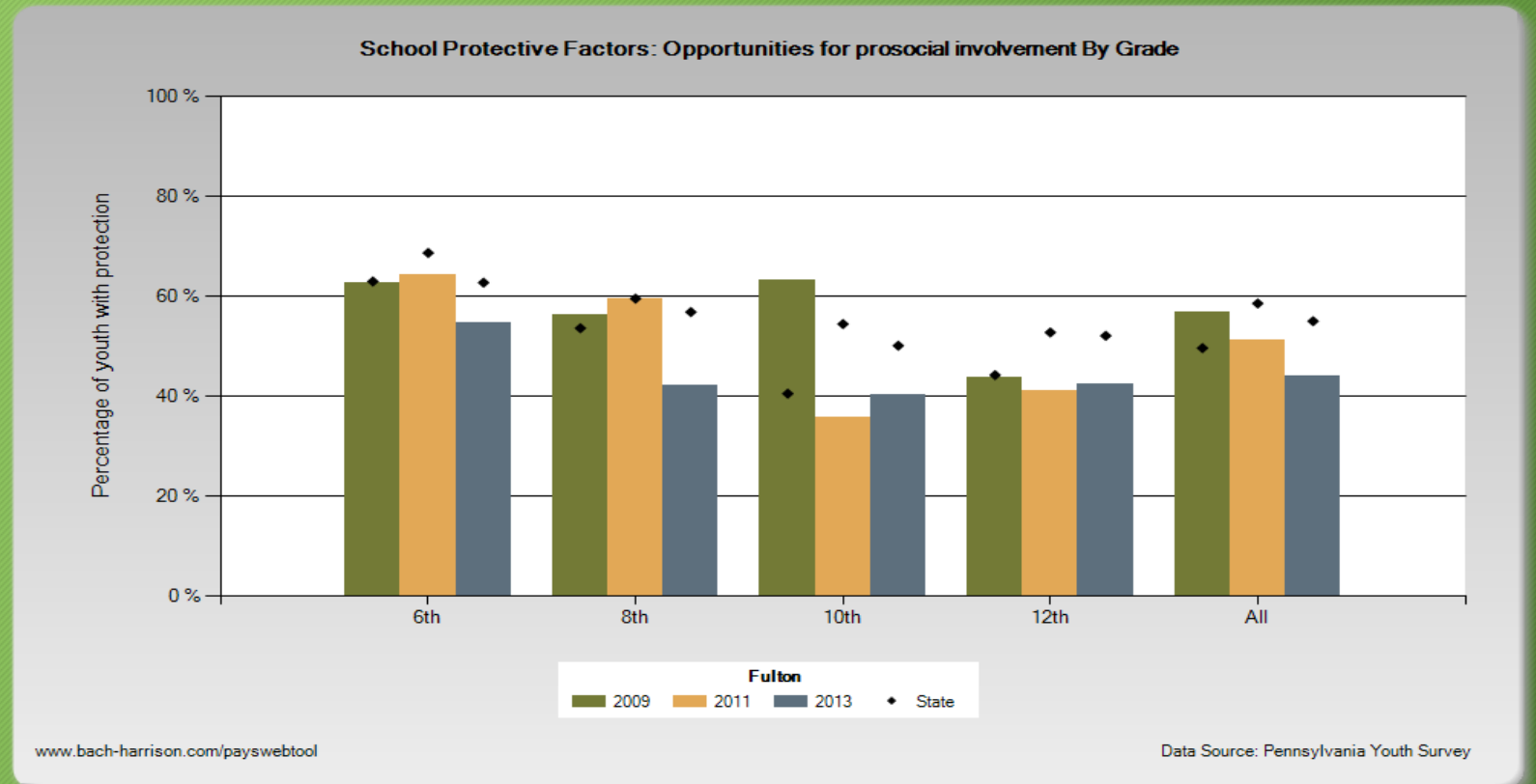




# Decreasing Protective Factor-Opportunities for Prosocial Involvement (School Domain)

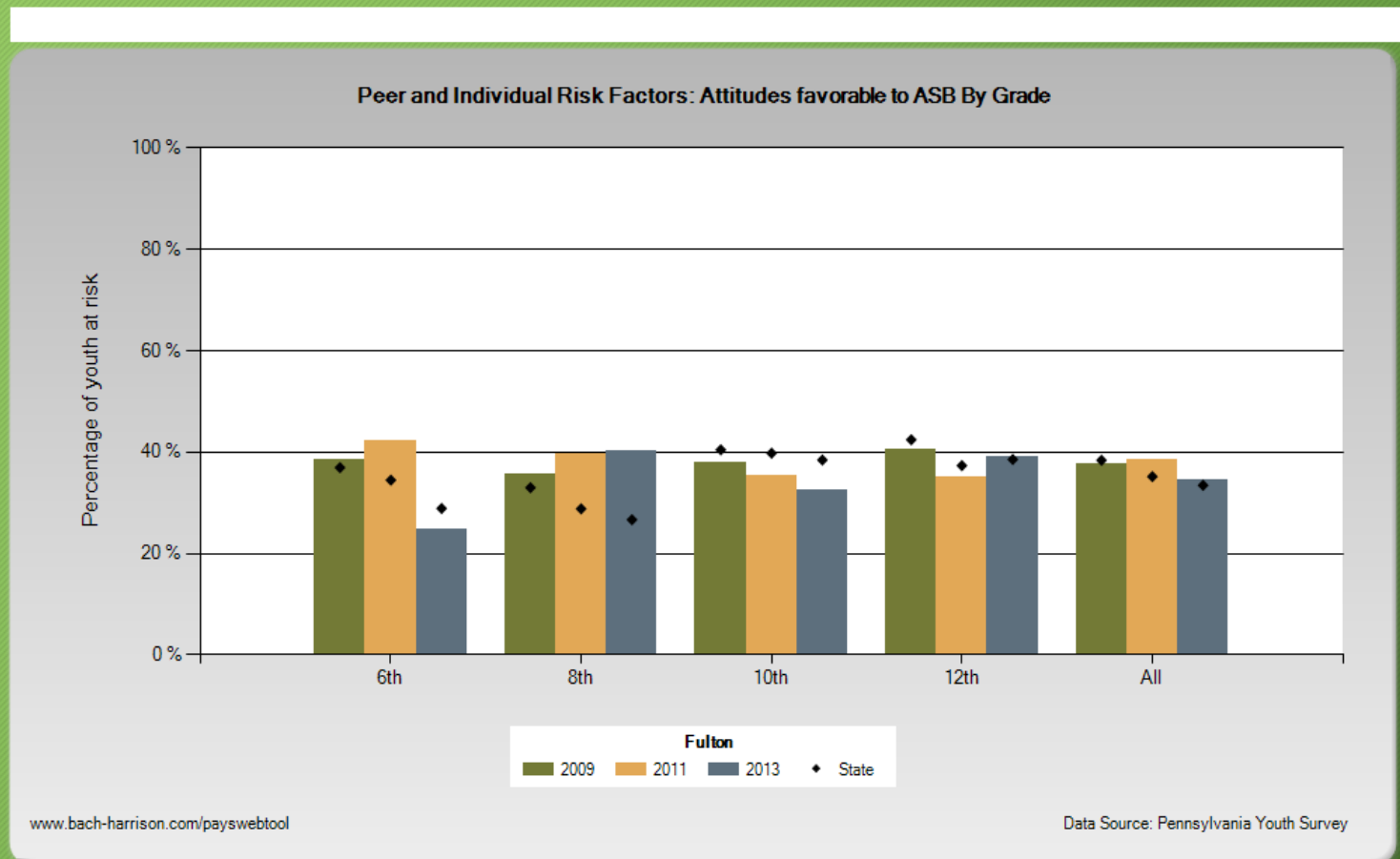
- *Current Programs*

- Incredible Years
- Olweus Bullying Program
- Providing Alternative Thinking Strategies
- Too Good for Drugs
- Student Assistance Program
- Check and Connect



# 2011 Risk and Protection Areas-Still on Radar

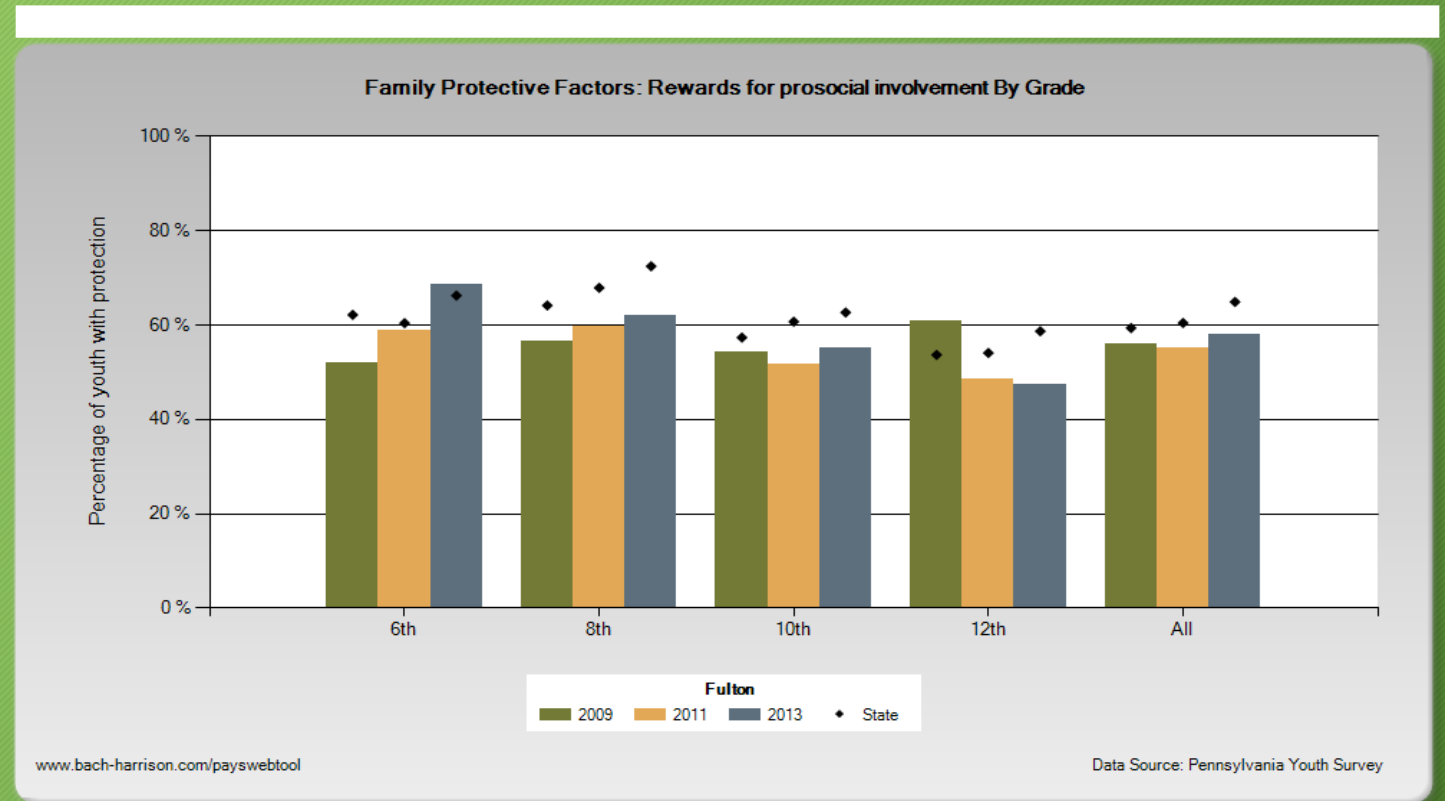
- Risk
  - Attitudes Favorable towards Antisocial Behavior (Peer/Individual Domain)



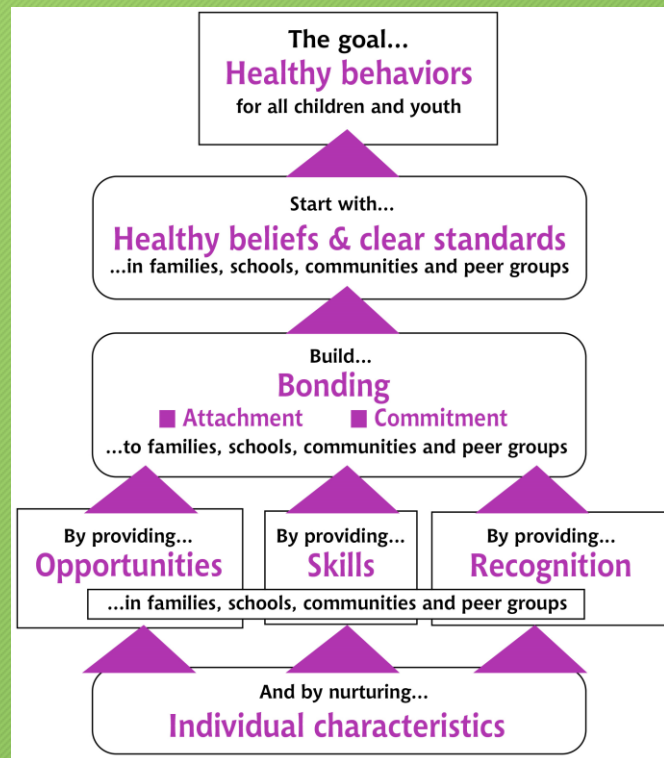


# 2011 Risk and Protection Areas-Still on Radar

- Protection
  - Family Rewards for Prosocial Involvement (Family Domain)



# Leadership Direction & Social Development

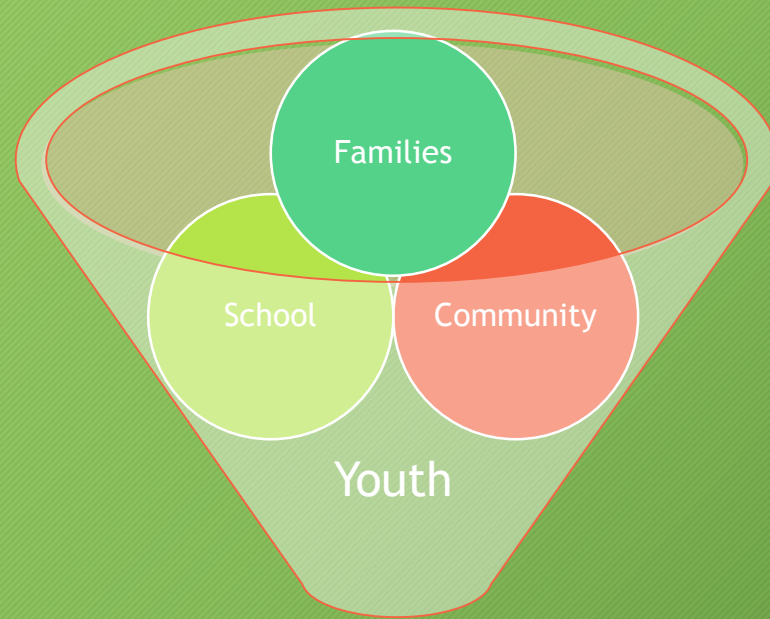




# Proposed Goals

- Goal Worksheet Handout

# Working Together



Healthy Behaviors